

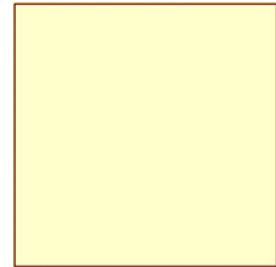
Tutorial: Paint.NET 3.36 - Framing an Image

If your catalogue includes images of various dimensions you may like to add a background image with set dimensions to give your images a consistent appearance.

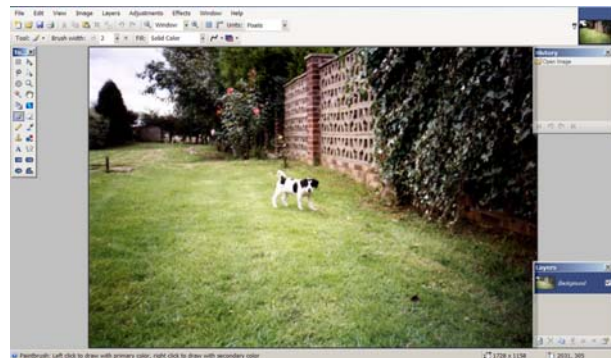
In this example I have used a background image of a framed square, but any background image could be used, even a plain white shape.

Create an image to use as a background 600 x 600 pixels (or get us to provide one)

This is an example:

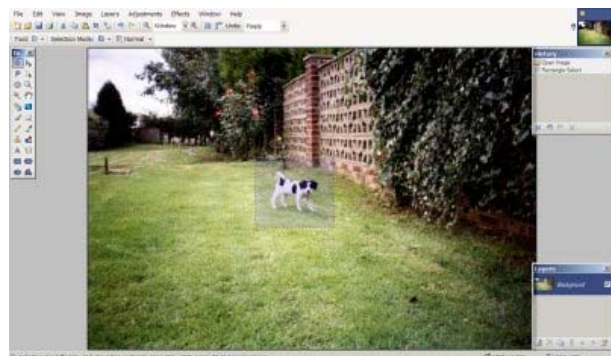


Open your **main** image in **Paint.NET**

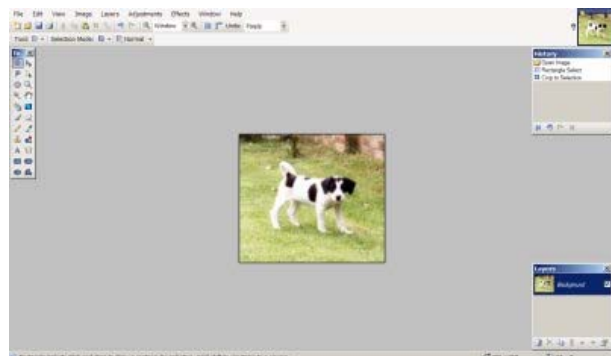


Crop the image so that you are only left with the most relevant part, do this by:

Click **Rectangle Select**, from the **Tools Panel** and take your mouse pointer over to your image and draw a shape around the area you want to keep, it will become shaded



Click the **Crop to Selection** Tool (this can also be found under the Image menu)



Resize your image

Click **Image, Resize** and
In the menu choose

- By absolute size
- Maintain aspect ration
- Width or Height **550** (whichever is the greater)
- Resolution 72 pixels per inch

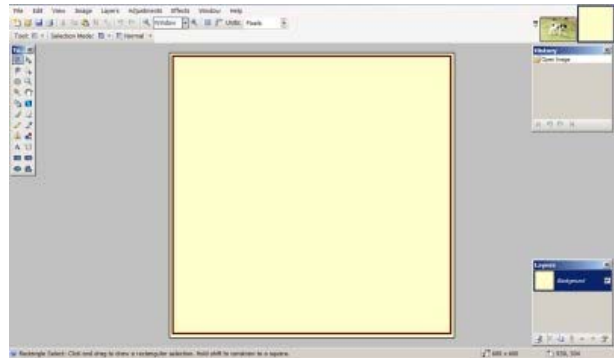


Click **OK** and **Save** your image

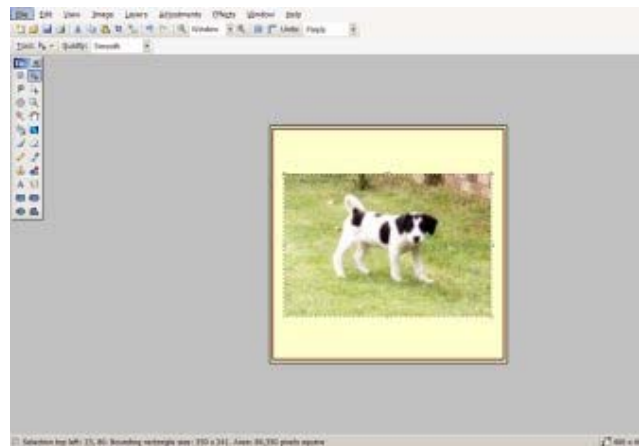
Copy this image by choosing **Select All** from the **Edit** menu, then choosing **Copy** from the **Edit** menu

The copied image will hold on your computer clipboard

Open your background image



Click **Edit, Paste in to new Layer** and your main image will be pasted onto your background image, move it to the centre by dragging it with your mouse pointer



Click **File, Save As** to save your new image as a separate file to your background image. Enabling you to use your background image again. Save as file type JPG.

(If you had just clicked 'save' you would have replaced your background image with your new image.)